

Mobile Latency Measurement App for latency spot checks and heatmaps

LATENCETECH

The LatenceTech Mobile App offers users the ability to perform real-time network and protocol-based latency spot checks, providing instant results that are displayed on the screen. These live results are also sent to our advanced analytics platform, Analyzer, which combines them with your device geolocation data to create on demand latency heatmaps and real-time quality indicators such as latency stability and volatility.

Supports
LTE/5G/WIFI

With this powerful tool, you can quickly identify latency issues and take action to improve the performance of your networks and applications. Whether you're a network administrator, a developer, or simply a user looking to optimize your mobile experience, the Mobile App is the perfect solution for indoor and outdoor real-time latency monitoring and analysis.

The screenshot shows the LatenceTech mobile app interface. At the top, the status bar shows 11:30, signal strength, Wi-Fi, and battery. The app header includes the LatenceTech logo and an information icon. The main content area displays:

- Agent ID: 752813491 and a timer at 00:00:06.
- A "Reflector" section with a "Montr..." button.
- A "Note" field with "Your note" and a "SAVE" button.
- "Average latency" section with two cards: "Network" at 28,56 ms and "Application" at 29,89 ms.
- "Latency by protocol" section with "HTTP" at 30,17 ms and "TCP" at 29,61 ms.
- A bottom navigation bar with a power button (circled in red) and a refresh button.

Annotations and callouts:

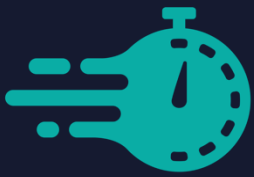
- Your own private Agent ID**: Points to the Agent ID field.
- Add your notes to measurements**: Points to the Note field.
- Select predefined target end points ("Reflectors") or create your own**: Points to the Reflector section.
- Visualize gaps between application and network latencies**: Points to the Average latency cards.
- Real-time Latency Results**: A box on the left lists protocols: TCP/UDP, HTTP/S/3, TWAMP, ICMP, and more...
- Start/Stop bandwidth measurements**: Points to the refresh button in the bottom bar.
- Start/Stop latency measurements**: Points to the power button in the bottom bar.
- Ping may often give you unrealistic results... better test with multiple protocols!**: A warning icon points to the protocol latency section.



Ping may often give you unrealistic results... better test with multiple protocols!



LATENCETECH

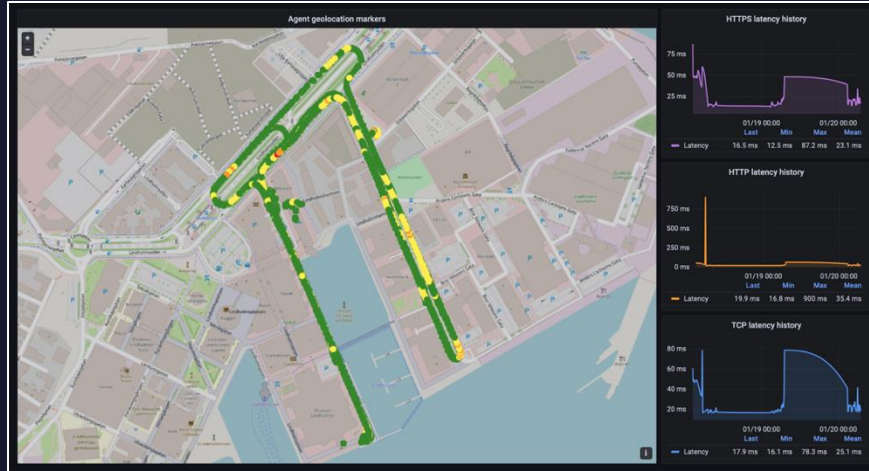


Real-time Latency Heatmaps to see Network Performance on demand

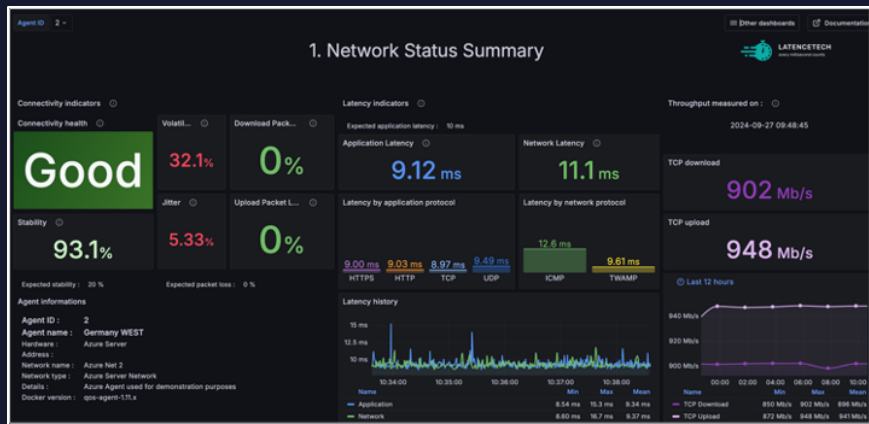
LATENCETECH

Latency levels

Dark Red	> 100ms
Red	70 to 100 ms
Orange	45 to 70 ms
Yellow	15 to 45 ms
Green	< 15ms



Advanced analytics with new KPIs on latency stability and volatility



Use the app to improve your business and your wireless networks:

- Perform thorough latency testing, indoors and outdoors, to pinpoint the best and worst spots for latency.
- Verify the quality of your new deployments with "before/after" testing.
- Compare the performance of LTE, 5G, and WIFI networks
- Visualize network latency changes over multiple hours, days or weeks.



In today's complex connectivity environment, innovative services such as teleoperation, AR/VR, telemedicine, as well as new industrial equipment like motors and robots, **require stable, upper bounded latency connectivity to perform optimally.**

To guarantee seamless business operations and ensure safety, it is imperative to continuously monitor latency. By proactively tracking latency levels, you can mitigate potential disruptions and optimize the performance of your time-critical innovations.



Any question? contact@latencetech.com



LATENCETECH